

Hebden Bridge Learning Community

1 to 3 days-a-week of creative learning for children from age 5 to 14

Democratic, Mindful
Learning Community
for Home-Educated &
Flexi-Schooled Children

Friendship, Democracy, Topic-Based
Learning, Individual Attention,
Experienced Teachers & Yoga.



“The children are treated kindly and with respect, their individual needs are met well and teachers are very creative in engaging them in learning. All teachers take a great interest in the development of the children and have lots of time for their ideas.” Parent

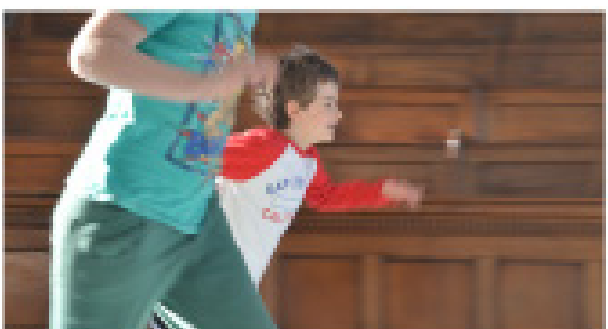
www.hebdenbridgelc.co.uk

We are an Ofsted registered childcare provider.


Ofsted
Registered

We offer mixed-age Learning Spaces for children aged 5-6 yrs, 7-10 yrs & 11-14 yrs

We are very lucky to have the Nutclough Woods behind the school. We often start the day with a walk through the woods and we take every opportunity to make nature our classroom. It's wonderful to watch the changing seasons, to have a snowball fight in Winter or sit together in the dappled sunshine.



Topic-Based Learning

The world is interconnected and the way we learn should reflect that. Each term a topic is chosen democratically by the children and educators and is studied in a way that connects science, humanities and the arts so that we can all see the bigger picture.

The learning spaces for the younger groups develop literacy and numeracy within the topic context as well as fun, hands-on science.

The older children combine topic-based learning with some individual subjects such as maths taught separately. All learning in the 11-14 yr group is excellent preparation for GCSEs.

What kind of children thrive with us?

Sensitive children that find mainstream settings stressful. These children flourish in our small, nurturing classes, away from the pressures of crowded classrooms and assessments.

Home educated children who are looking for interaction with other children and to learn with a variety of educators.

Free-spirited children who don't want to spend their days sitting at a desk and being told what to do. Here they love choosing what and how they will learn and having the time and space to be themselves.

Bright children who are frustrated in mainstream settings. These children really want to learn and not spend their time following petty rules or waiting for the teacher to deal with behavioural issues.

Children with mild learning difficulties. They really benefit from the small class sizes, the extra support and being genuinely listened to.

Children who have been bullied in mainstream settings feel accepted for who they are without having to try to fit in. They feel respected and valued by the educators and the other children.

Introducing our educators



Natalie



Liva



Gemma



Nimrod



Emma



Megan

What kind of school would children and educators create together?



We're open: Wednesdays, Thursdays & Fridays 9:30am - 3:30pm

Hebden Bridge Learning Community
The Birchcliffe Centre, Hebden Bridge,
West Yorkshire, HX7 8DB.

T: 01422 229748

www.hebdenbridgeschool.co.uk

hello@hebdenbridgeschool.co.uk



Mindful
Creative
Democratic

Hebden Bridge
Learning Community